

PART OF THE N.W. 1/4, SEC. 34, T.6N., R.1W., S.L.B. & M.

HIGHLAND ADDITION  
AMENDED

BLOCKS 3 & 4

IN OGDEN CITY

SCALE 1" = 50'

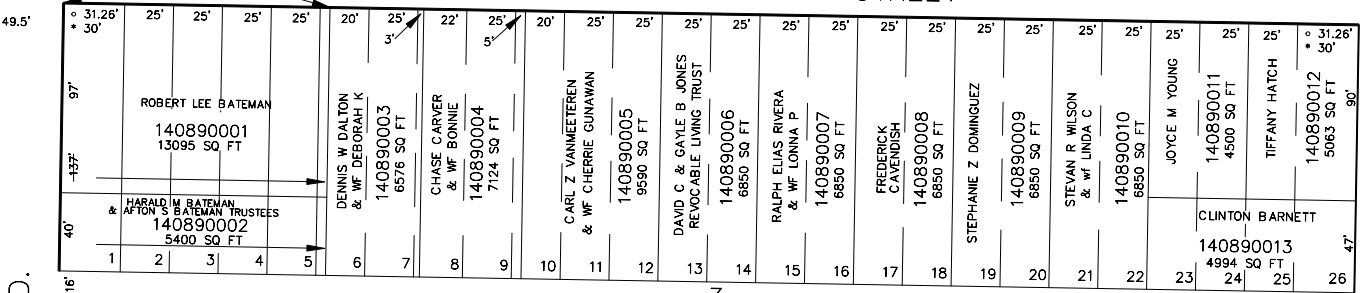
FOR COMPLETE ENG DATA SEE ORIGINAL DEDICATION PLAT IN BOOK 5, PAGE 1 OF RECORDS.

TAXING UNIT: 25

SEE BK. 2, PAGE 18

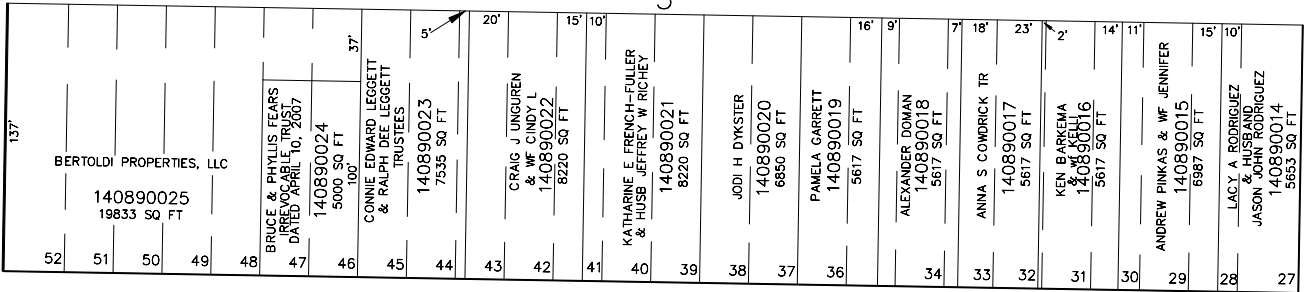
27TH

STREET



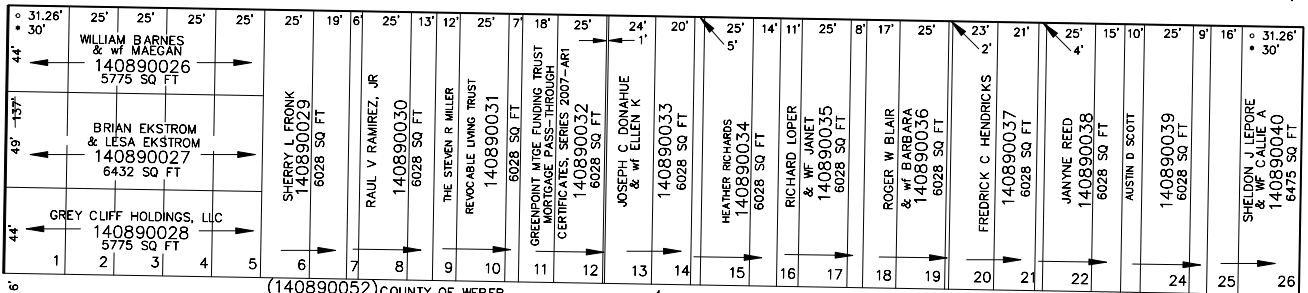
BLVD.

AVENUE



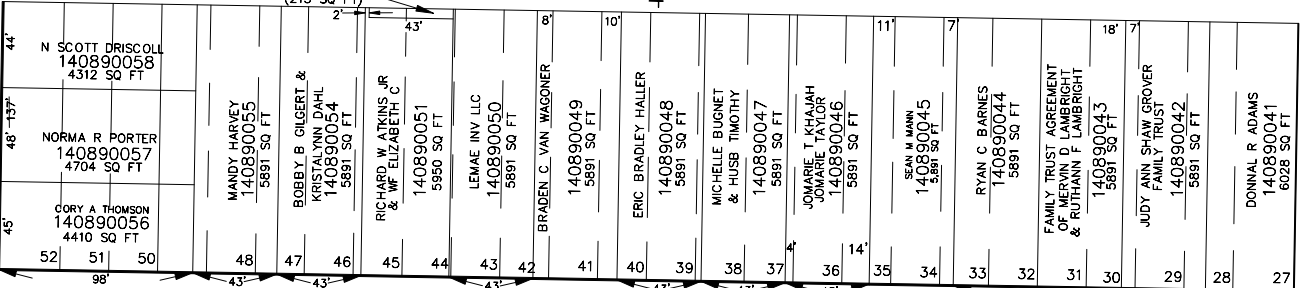
MARILYN

DRIVE



HARRISON

TYLER



28TH

STREET

SEE BK. 2, PAGE 15

SEE PAGE 88